

An aerial photograph showing a vast sugarcane field on the left, characterized by dense, vibrant green stalks. To the right, a reddish-brown field, likely a sugarcane field after harvest or a different type of agricultural land, is visible. A narrow, dark, muddy path or drainage ditch runs diagonally between the two fields. The overall scene is captured from a high angle, emphasizing the geometric shapes and textures of the agricultural landscape.

# **TERRA MAURICIA LTD**

Corporate Governance Structure

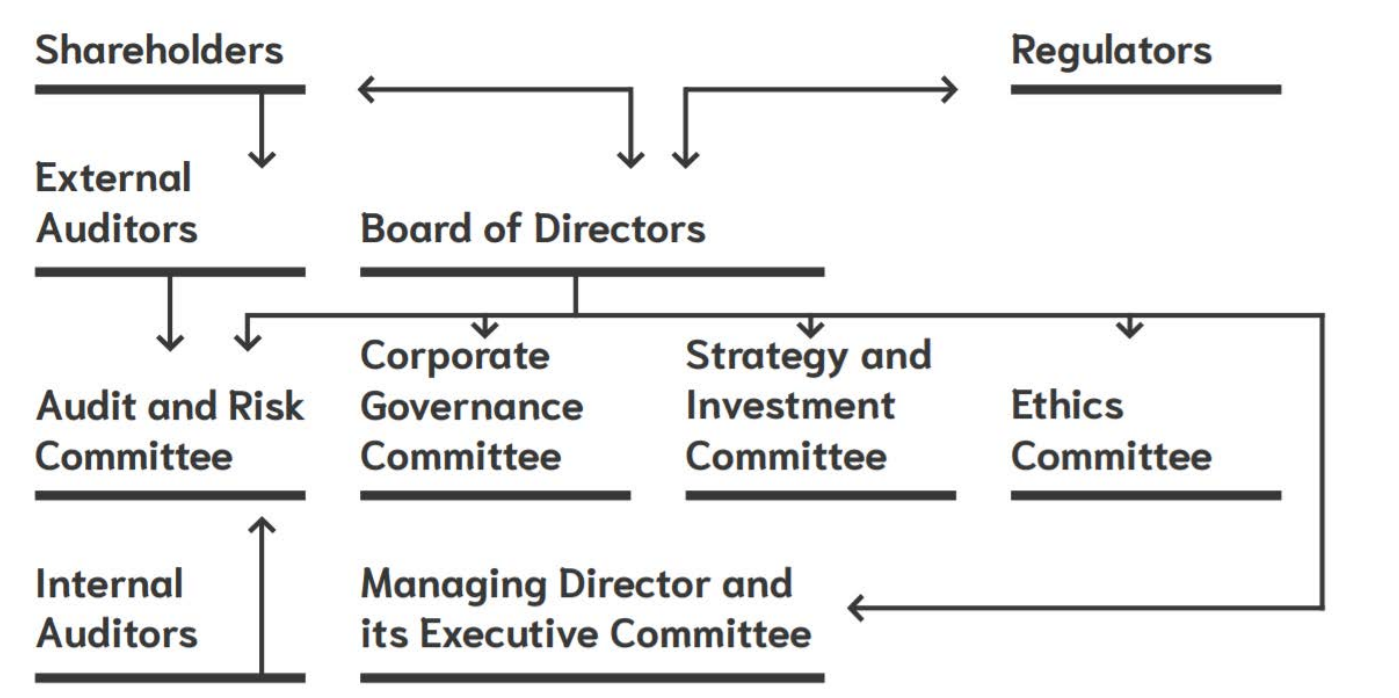
For the future. From 1838

**terra**



Governance Framework and Delegation of Authority

Terra’s governance structure provides for delegation of authority while enabling the Board to retain effective control. The Board delegates specific responsibilities to the Managing Director, as well as to Board committees with clearly defined mandates. Their terms of reference, which have been approved by the Board, are reviewed every three years and were reviewed in 2020 . While an independent director assumes the chairmanship of the Audit and Risk Committee, the Chairman of the Board chairs the three other committee in order to ensure a smooth and proper coordination between these committees and the Board



This document has been approved by the Board of directors of Terra Mauricia Ltd.

Latest review: 2021.